



## KMA Genuine Approved Accessories

Vehicle Model	<u>Sorento (Non Sun Roof)</u>	Accessory	<u>Crossbars</u>
Model Year	<u>2010</u>	Difficulty	<u>A</u>
KMA Part No.	<u>1U021 ADU00</u>	Pamphlet No.	<u></u>
Vendor Part No.	<u>1U021 ADU10</u>	Revision No.	<u></u>
	<u>202668</u>		

- Disassembly
- Accessory Installation
- Function Check
- Visual Check

Note: Difficulty stated above reflects the minimum level of expertise required to install the accessory  
 ( A ) Customer ( B ) Dealer Technician ( C ) Master Technician

### Instructional Symbols / Definitions

	Denotes warnings that may lead to serious physical injury or vehicle damage.		Denotes quality processes to be checked prior to moving to the next step.	Denotes safety equipment required to be used such as a mask, goggles, rubber gloves, and hearing protection.	
	Denotes cautions to be taken to avoid physical injury or electronic component damage.		Denotes specific tools that are necessary to complete the step.		
	Denotes cautions to be taken to avoid vehicle and component damage.		Denotes instructional steps necessary to complete the process.		
				Mask	Goggles
				Rubber Gloves	Hearing Protection

### Basic Required Hand Tools

Stool/Bench			

### Specialty Required Tools

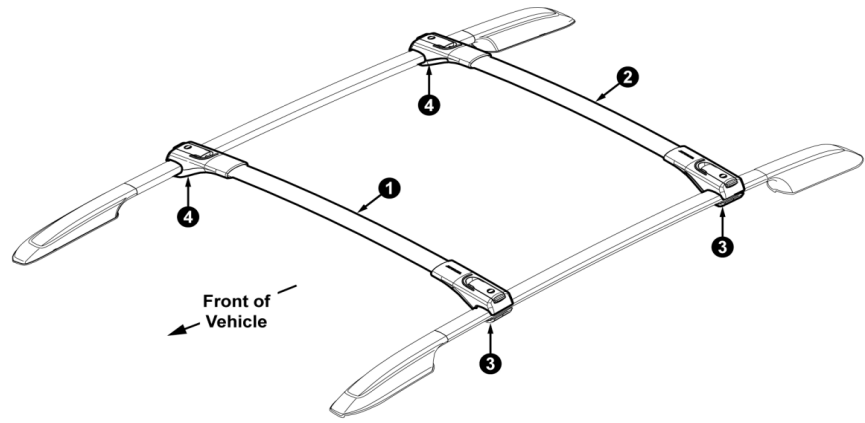
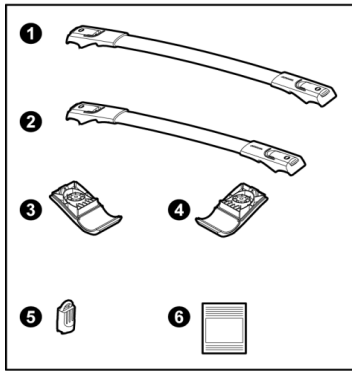
none

### Notes to the Installer

- Read the entire installation pamphlet prior to beginning the installation of the accessory.
- Ensure that the vehicle is properly protected in the area that the accessory is to be installed.
- To prevent vehicle damage, never place tools on top of painted surfaces, seats, dash pad, console or floor carpet / mat.
- Always wear appropriate safety gear to include gloves and eye protection when required.

# KMA Genuine Approved Accessories

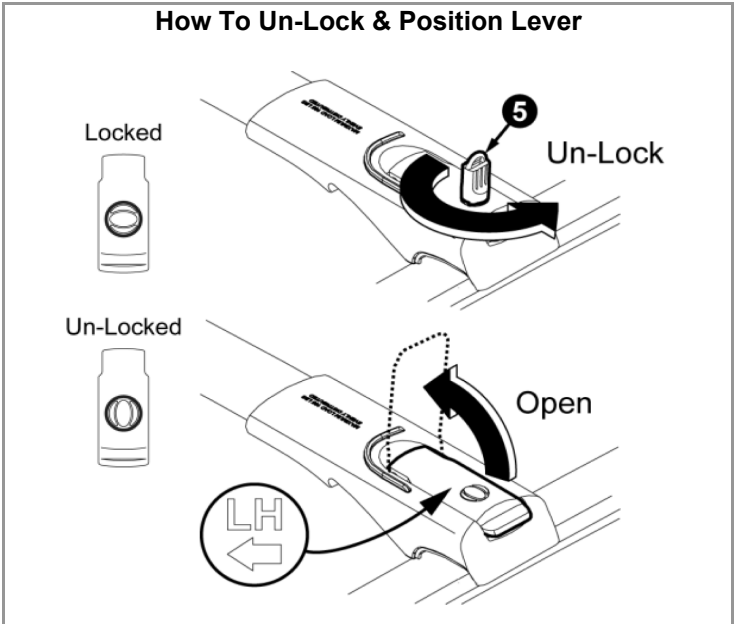
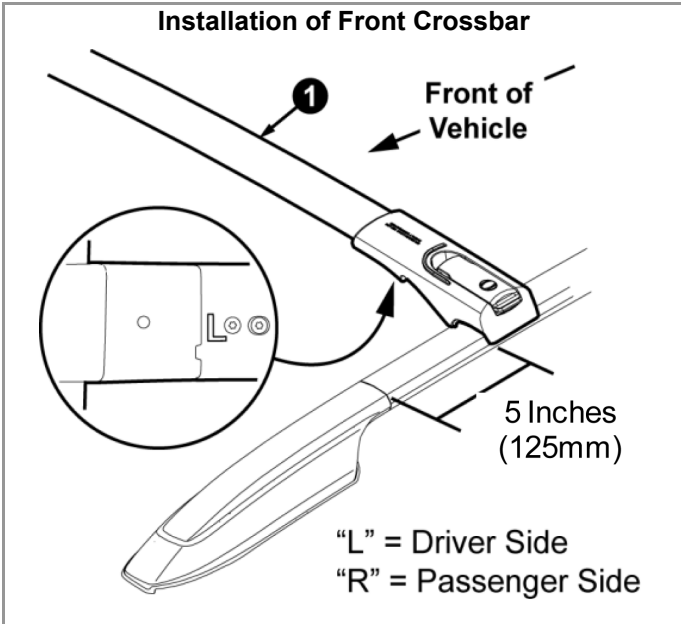
## Kit Overview



**⚠ WARNING:** Do not exceed manufacturer's roof load limits of 220 lbs / 100 kg (evenly distributed). See owners manual.  
**NOTE:** The RH side of the crossbar is not assembled tight, and will slide.

No.	Qty.	Description	No.	Qty.	Description
1	1	Front Crossbar (longer)	4	2	RH Clamp
2	1	Rear Crossbar (shorter)	5	2	Key
3	2	LH Clamp	6	1	Quick Reference Guide card (QRG)

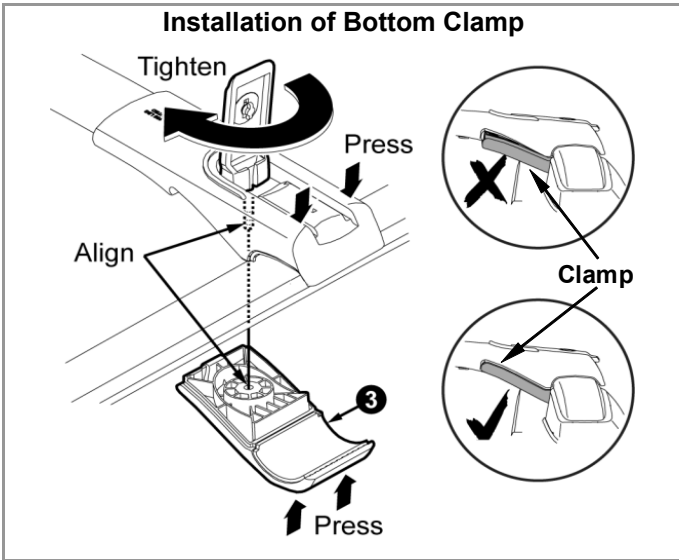
## KMA Genuine Approved Accessories (Preparation & Disassembly)



<b>NOTE</b>	<p style="text-align: right; margin-right: 10px;"><b>1</b></p> <p>Place front cross bar over the luggage rack side rail on vehicle. Position front cross bar 5 inches (125mm) rearward from seam where side rail and side rail cover meet. "L" mark is for Driver Side, "R" mark is for Passenger Side.</p> <p><b>⚠</b> When applying equipment, accessories, or any load to cross bar, it must be positioned all the way forward on the front seam.</p>
-------------	--

<b>NOTE</b>	<p style="text-align: right; margin-right: 10px;"><b>2</b></p> <p>Using supplied key, turn lock in lever to un-lock the lever, and lift it up away from the support.</p> <p><b>NOTE:</b> marking under clamp indicates LH or RH and also an arrow showing front of vehicle.</p>
-------------	---

## KMA Genuine Approved Accessories (Installation)

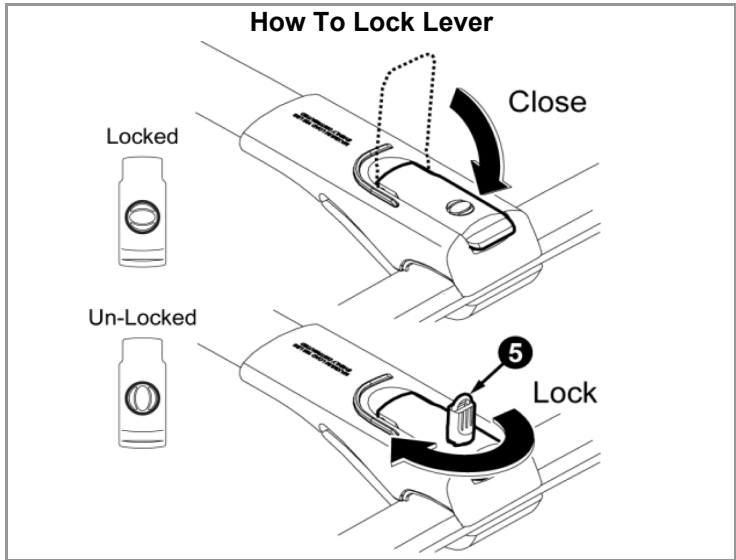


**3**

**NOTE** Position clamp underneath side rail under cross bar support. While positioning the clamp, insert the lever through the hole on the support and into the clamp.

Make sure lever screw engages and bottom support is flush with upper support. Tighten lever handle until handle bottoms out on support.


**NOTE:** Use a stool or bench so that the installer is above the lever looking down for installation to verify alignment of the hole in the clamp to the hole in the support.

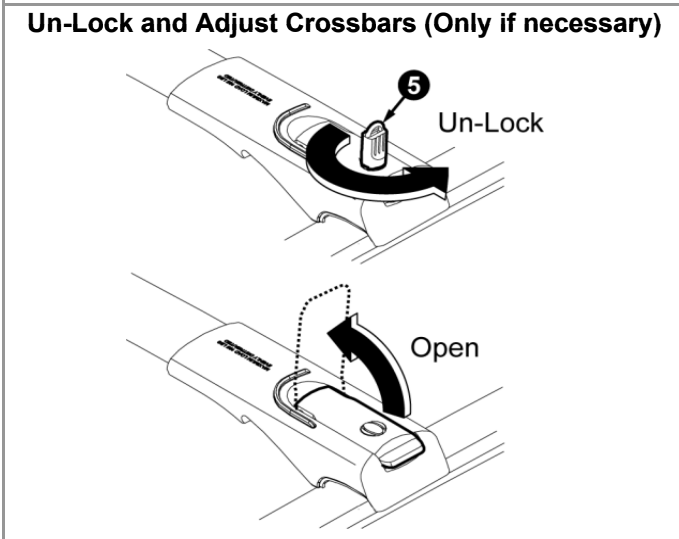


**4**

**NOTE** After lever is tight, back off until lever lines up with opening in support, and close lever.

Using supplied key, turn lock in lever to lock the cross bar in position.

 It may be necessary to turn the lever handle back one turn to get it to line up in the support. **DO NOT TURN LEVER HANDLE MORE THAN ONE TURN.**



**5**

**NOTE** To adjust crossbars, unlock and lift levers on **BOTH SIDES** to release crossbar. **DO NOT SLIDE** crossbar into position, lift slightly, move to new location, close the lever and lock.

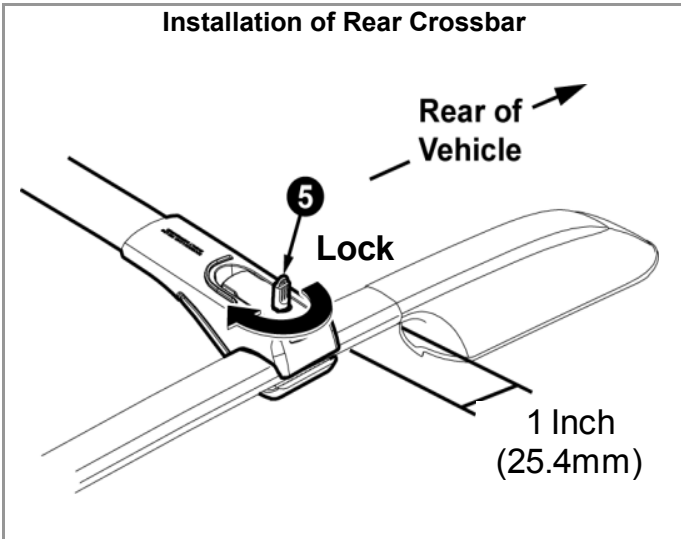
**NOTE:** Clamp does not need to be removed when adjusting crossbars.

**REPEAT STEPS 2-6 TO THE PASSENGER SIDE SUPPORT OF CROSSBAR**

**6**

**NOTE**

## KMA Genuine Approved Accessories (Installation)

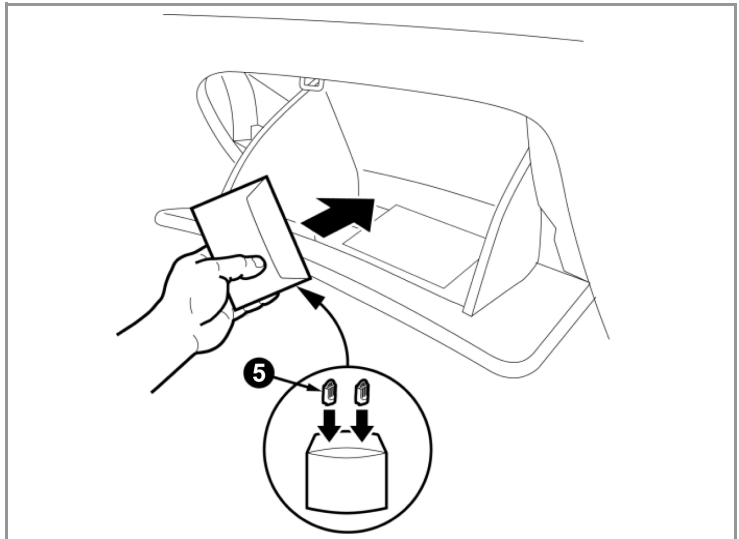


7

**NOTE** Repeat steps 2 - 7 and install the rear cross bar.  
Rear cross bar should be placed so that it is one inch (25.4mm) forward of the rear seam line between the side rail and the side rail cover. Turn lock in lever to lock the crossbar.

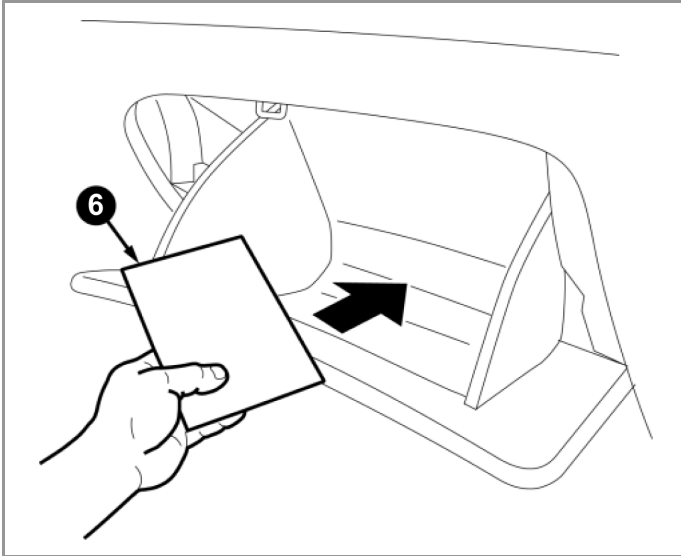


When applying equipment, accessories, or any load to cross bars, the rear cross bar must be positioned 27.5" rearward of the front cross bar.



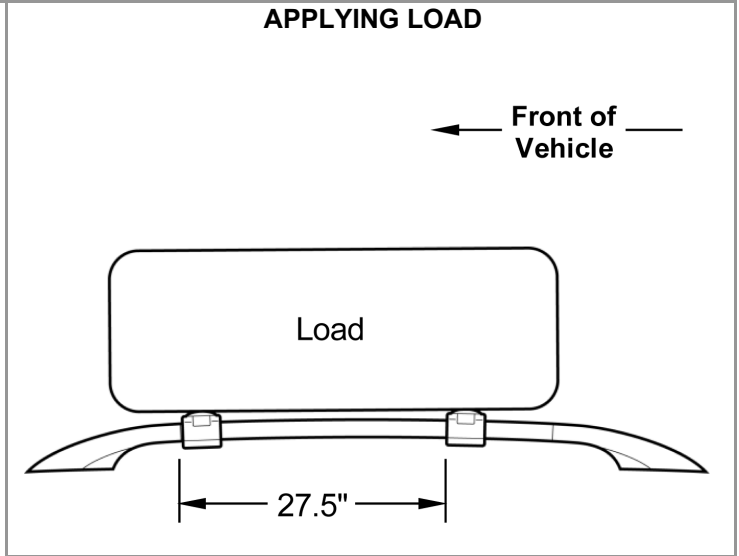
8

**NOTE** After installation, Place both keys in enclosed plastic bag. Place bag in glove compartment.



9

**NOTE** After installation, Place Quick Reference Guide and plastic bag in glove compartment.






10

**NOTE** Before applying load, move front crossbar to forward position (lined up with front seam) and rear crossbar 27.5" inches behind. Measurement should be from front of the front crossbar to the front of the rear crossbar. Load should be equally distributed.


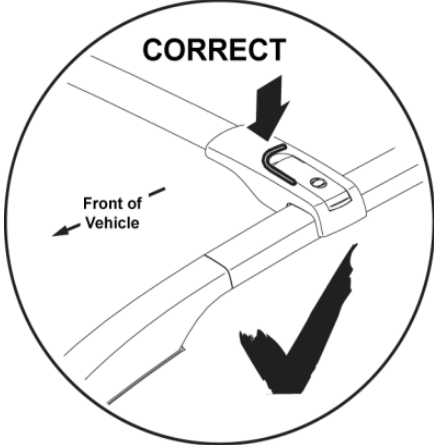
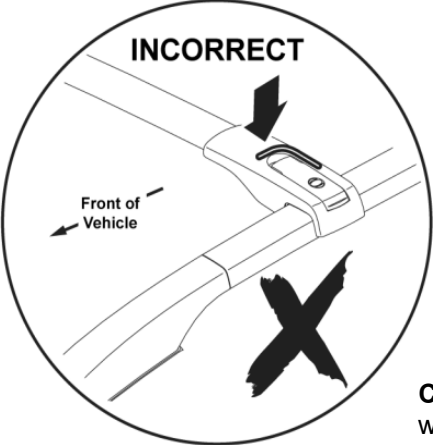


When applying equipment, accessories, or any load to cross bar, it must be positioned all the way forward with the front of the crossbar lined up to the seam.

## KMA Genuine Approved Accessories (Function Check)

Items To Be Checked	Results of the Check
 <p>Check the adjustability of the crossbars by unlocking and lifting both levers and moving them forward and rearward.</p>	The crossbars should slide forward and rearward when the lever is unclamped. You should not have to remove the clamp to adjust the cross bars.
 <p>With the levers closed, ensure the crossbars are in a locked position and do not move forward and rearward. Attempt to move the crossbars forward and rearward with the levers closed.</p>	Crossbars should not move forward or rearward.
 <p>Check the cross bars are locked, and the levers can not be lifted</p>	The levers should not move when the lock is in the lock position.

## KMA Genuine Approved Accessories (Visual Check)

Items To Be Checked	Results of the Check
 <p>Verify correct orientation of crossbar.</p>	Wind noise reduced
<div style="display: flex; justify-content: space-around; align-items: center;"> <div style="text-align: center;"> <p><b>CORRECT</b></p>  </div> <div style="text-align: center;"> <p><b>INCORRECT</b></p>  </div> </div> <p style="text-align: right;"><b>Caution:</b> Incorrect installation will cause wind noise.</p>	